



RIPE NCC
RIPE NETWORK COORDINATION CENTRE

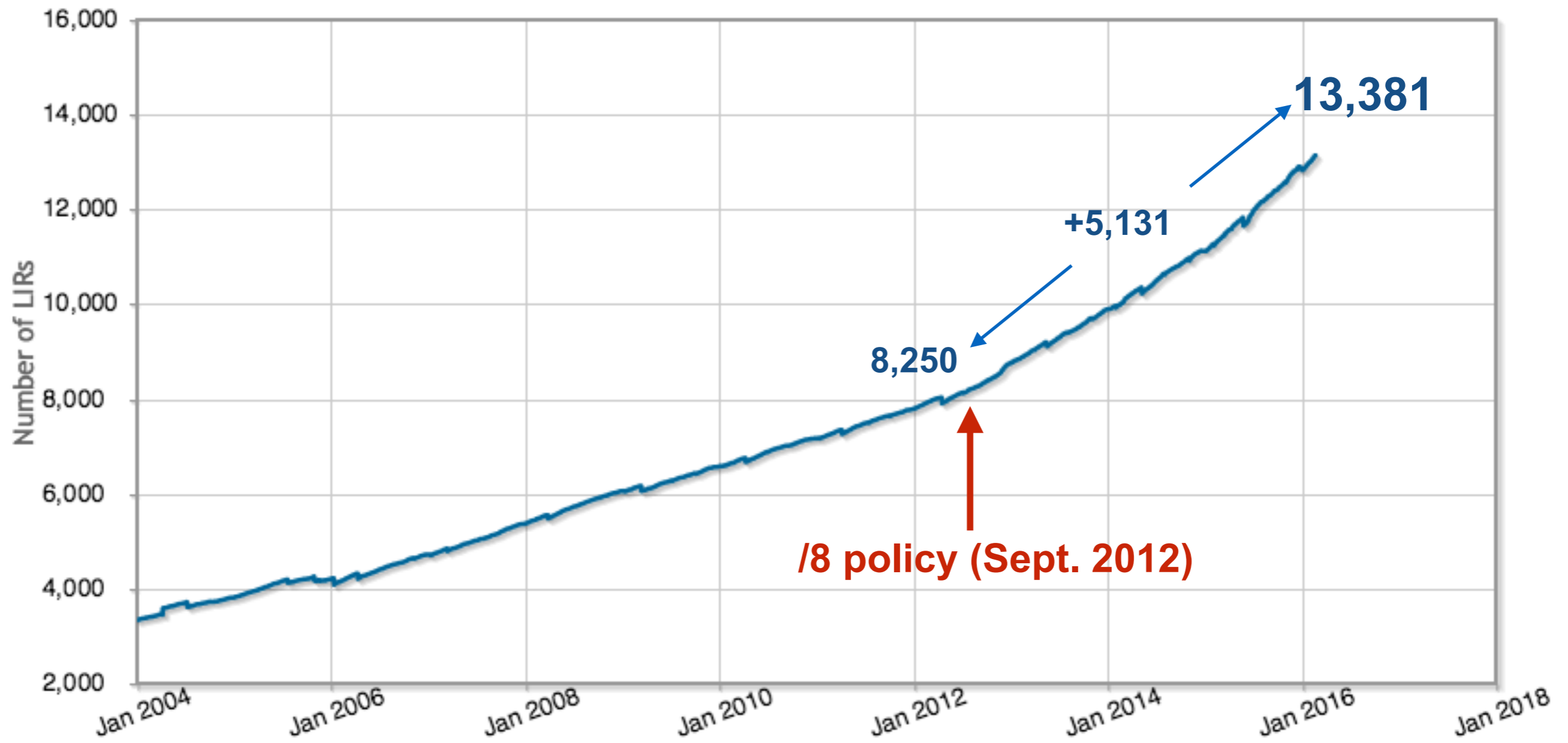
RIPE NCC Update

Serge Radovcic
Chief Communications Officer

Growing Membership



Total Number of LIRs



Who Are These New Members?

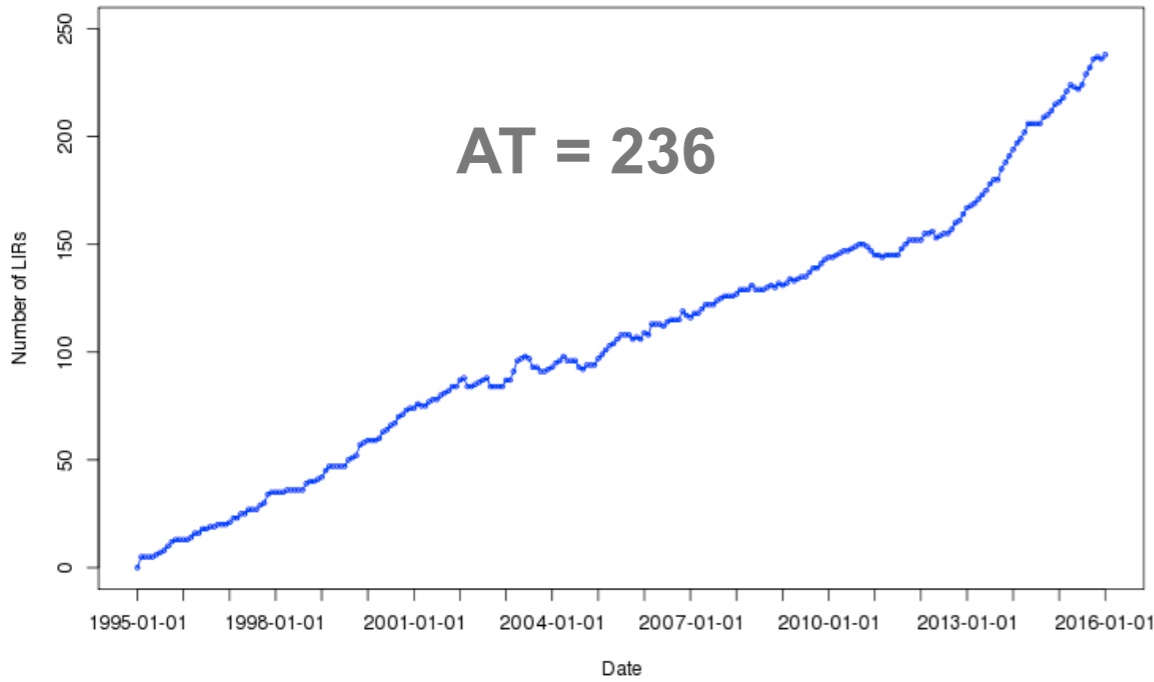


- Our membership is changing from simply ISPs, Telcos and NRENs
- Increasingly we're seeing banks, manufacturers, enterprise networks, airports, rail networks, etc.
- How will we introduce them to RIPE and encourage them to participate?
- How do we address the needs of these new kinds of members?
- RIPE NCC Survey in 2016 will try and gather their priorities and perspectives

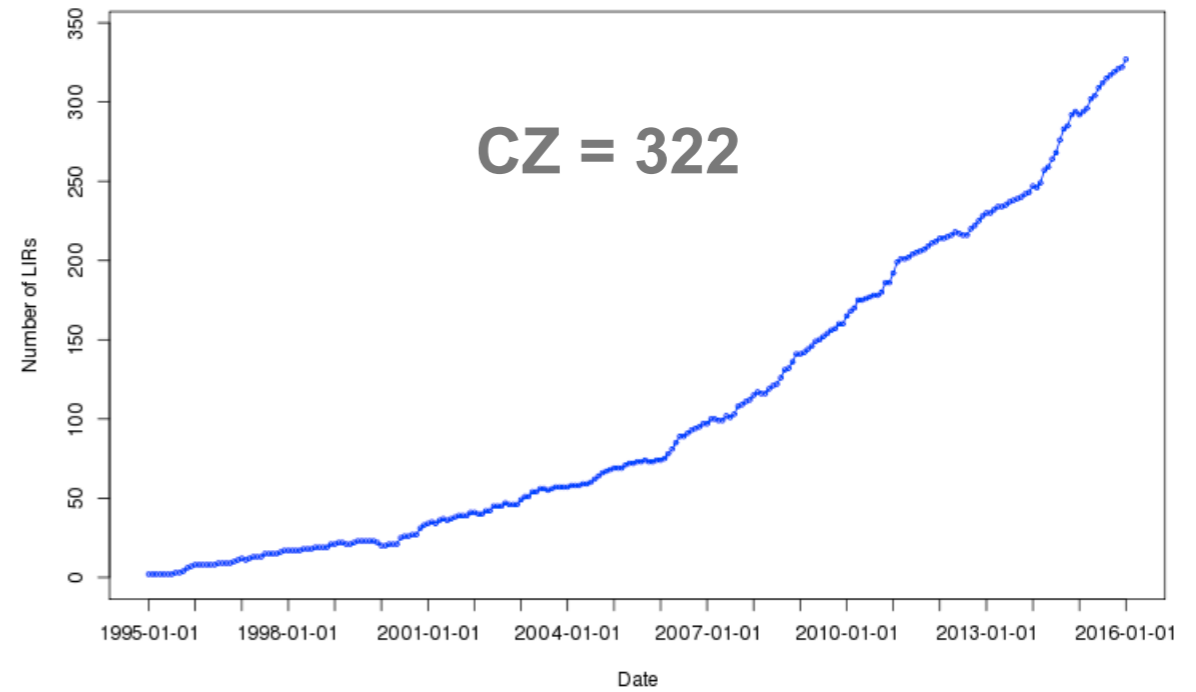
Membership growth in the region



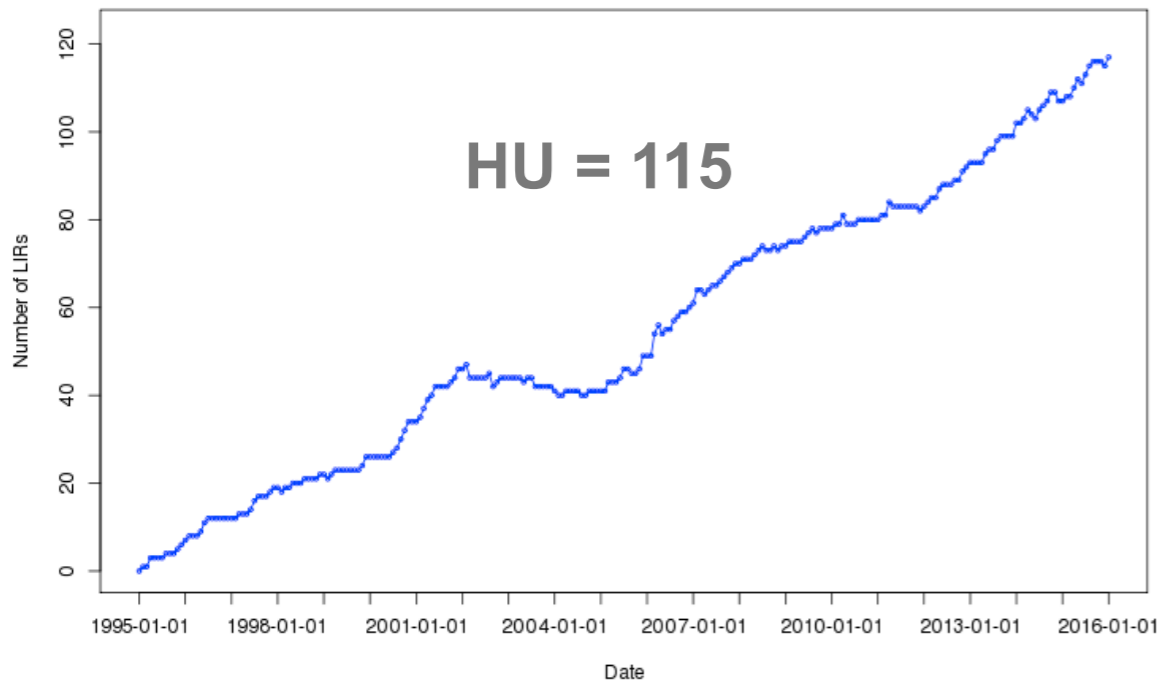
Number of at.* provider registries over time



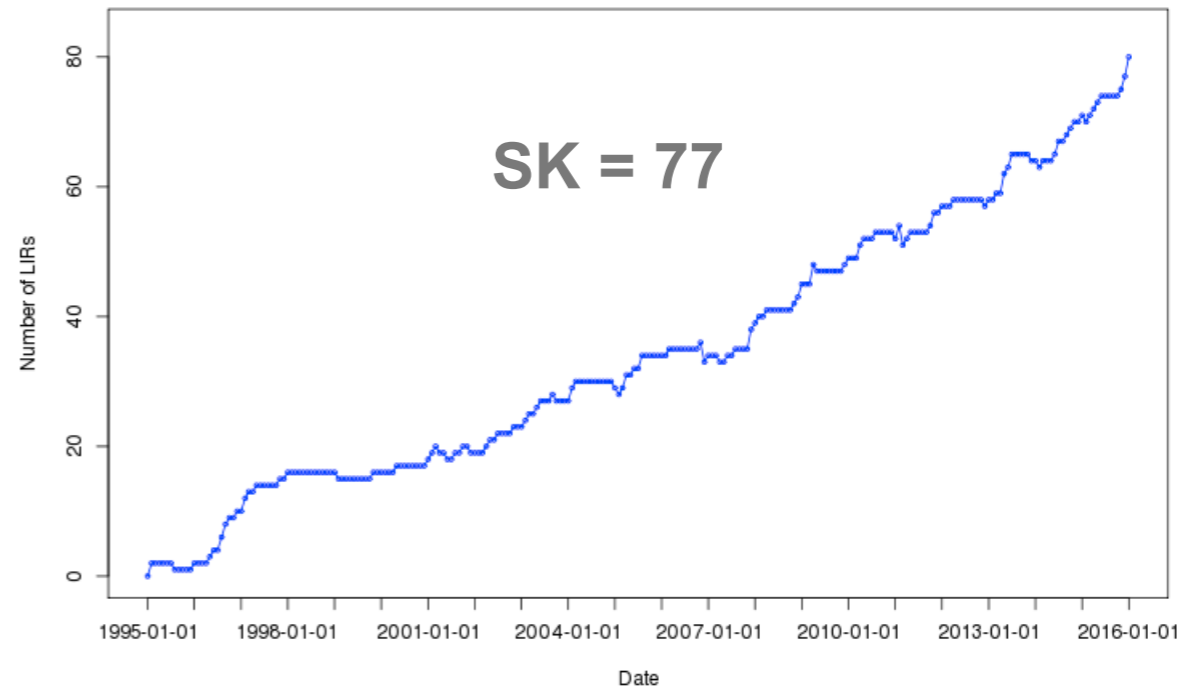
Number of cz.* provider registries over time



Number of hu.* provider registries over time



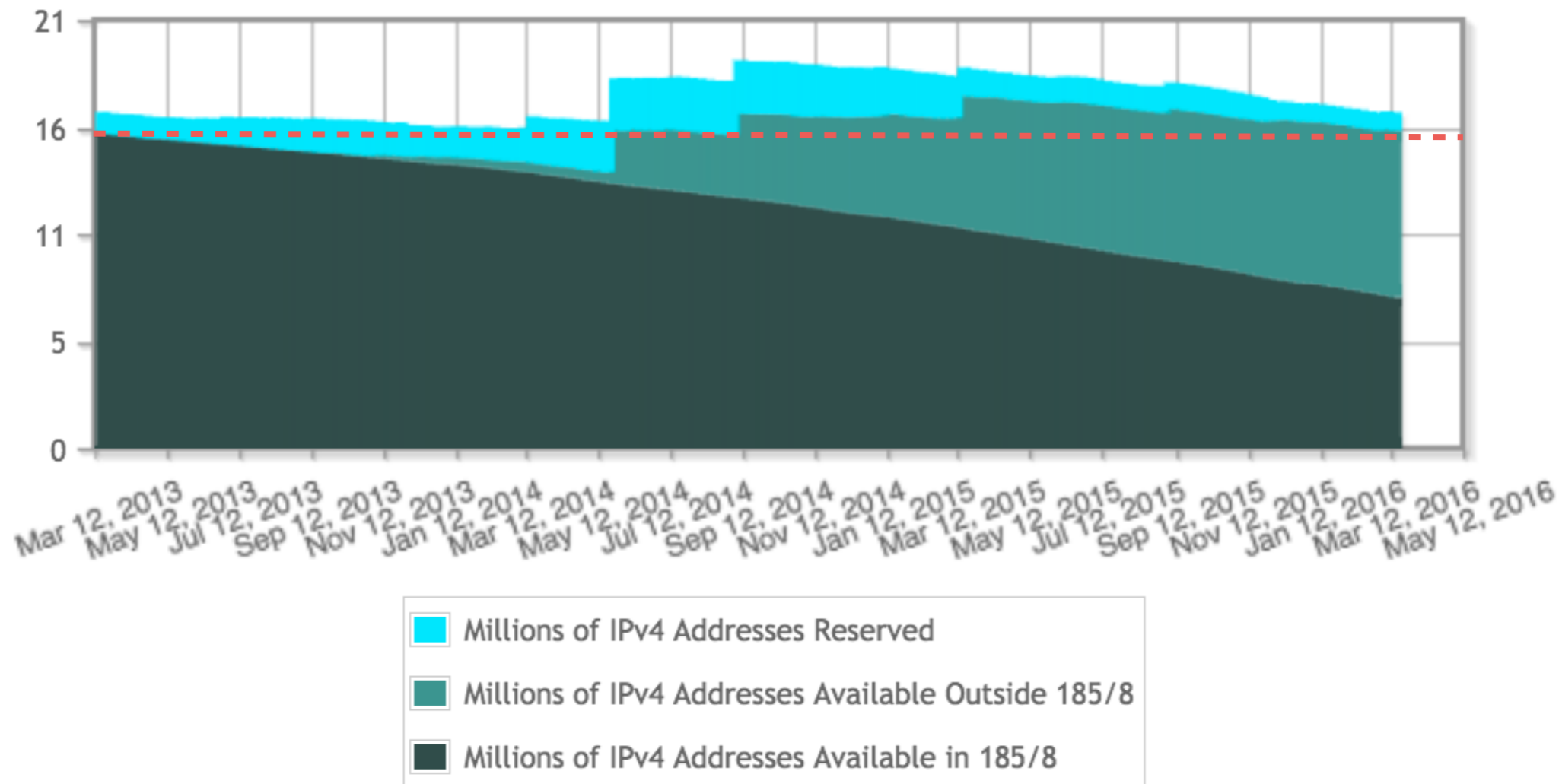
Number of sk.* provider registries over time



RIPE NCC Available IPv4 Pool



RIPE NCC IPv4 Pool – Last 36 Months



www.ripe.net/IPv4-graph

Addressing Multiple LIRs



- Since reaching the last /8, some people have started opening multiple LIRs to get additional /22s
- At RIPE 71, our Executive Board put a hold on the ability for a single legal entity to open multiple LIRs
- Membership is currently discussing the issue
- Executive Board will consider the outcome of this discussion at its next meeting in March

Resource Transfers



- All Internet number resources can be transferred within the RIPE NCC service region
- Number of IPv4 transfers increasing
 - 919 in 2014 / 2,701 in 2015
- In 2015 we saw approximately 225 transfers per month

Inter-RIR Transfers



- Policy was implemented in September 2015
- Since then we've seen 26 inter-RIR transfers:
 - Mostly *to* the RIPE NCC service region
 - 1 from RIPE NCC to ARIN
 - 4 from APNIC to RIPE NCC
 - 21 from ARIN to RIPE NCC
 - ranging from /22 to /11 equivalent (i.e. 8 x /14)

Improving Members' Registry Data



- Assisted Registry Check (ARC) started in 2014
- A lightweight check of members' registry data conducted over the phone, with emails to follow-up
- Emphasis on adding value by helping members update their contact details, resolve issues, explaining policies, and more....
- Great way for us to keep in touch with the membership throughout service region

ARC: Some Numbers



“One of the RIPE NCC’s key responsibilities is to maintain the accuracy and quality of the RIPE Registry”

2,200 ARCs completed so far

- 93% of ARCs resulted in LIR data update
- 131 ARCs completed in the region (AT, CZ, HU, SK)
- In order to request an ARC contact us at lir-help@ripe.net

Action Taken	LIRs Helped
LIR Portal Admin Privileges	487
LIR Contact Details	1032
Billing Issues	148
LIR Resource Registration	1115
PI Resource Registration	163
Maintainer Password Recovery	166
Routing Consistency	459
rDNS Consistency	556

Address Hijacking



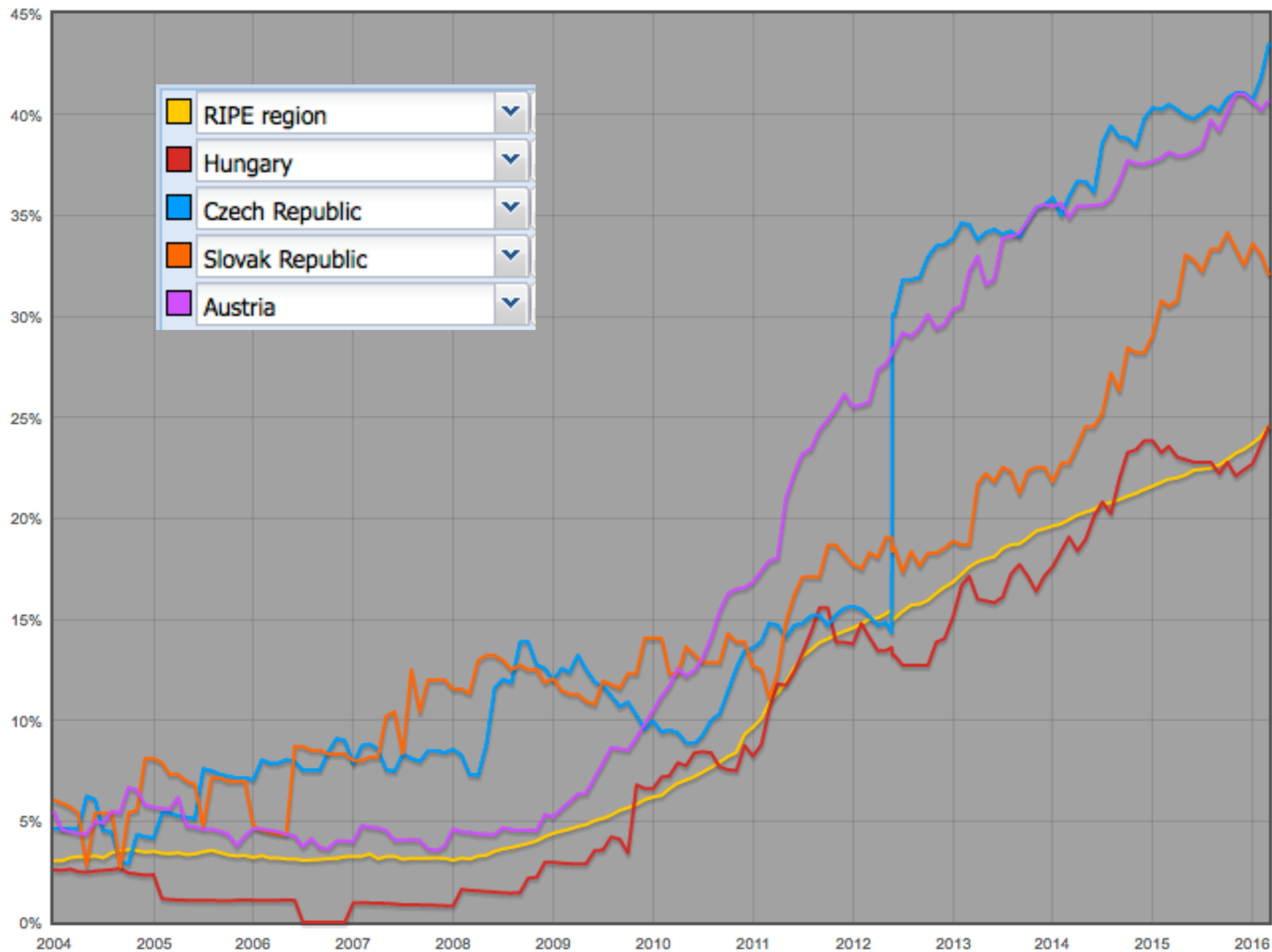
- Increased hijacking activity since IPv4 depletion reached
- 134 cases investigated in 2015
- Mostly targeting legacy and Provider Independent (PI) resources
- Sophisticated methods: re-registering expired domains, forged documents
- Urging our members to update their registry data to protect their resources

Protect Your Resources



- Ensure you verify your details in the LIR portal
 - Company address and contact details
 - RIPE NCC Access accounts
 - List of people authorised to make changes
- When receiving a transfer ensure the person you are dealing with is authorised!
- Check your information at regular intervals
 - In case of doubts or questions contact us at lir-help@ripe.net

IPv6 Announcements

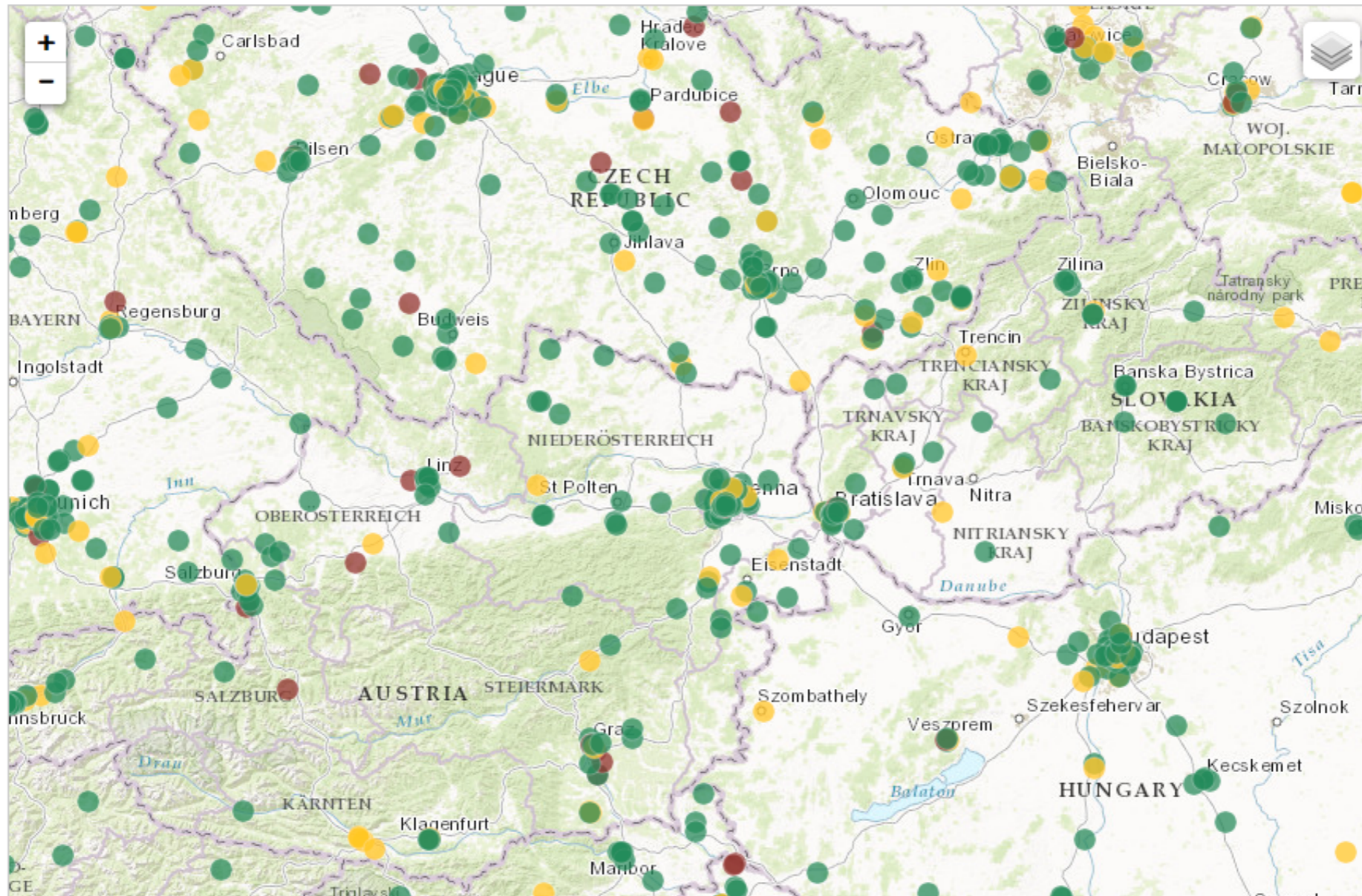


RIPE Atlas



- Measures Internet connectivity & reachability
- Assists you in monitoring, investigating and troubleshooting network issue
- 9,416 connected probes and 188 RIPE Atlas anchors
- Not far from our goal of 10,000 probes!
- Find out how others are using RIPE Atlas:
 - <https://labs.ripe.net/atlas/user-experiences>

RIPE Atlas - Probes in the region



- Strong probe host community in the region
- AT = 173, CZ = 264, HU = 74, SK = 43

RIPE Atlas - IPv4 path in traceroutes

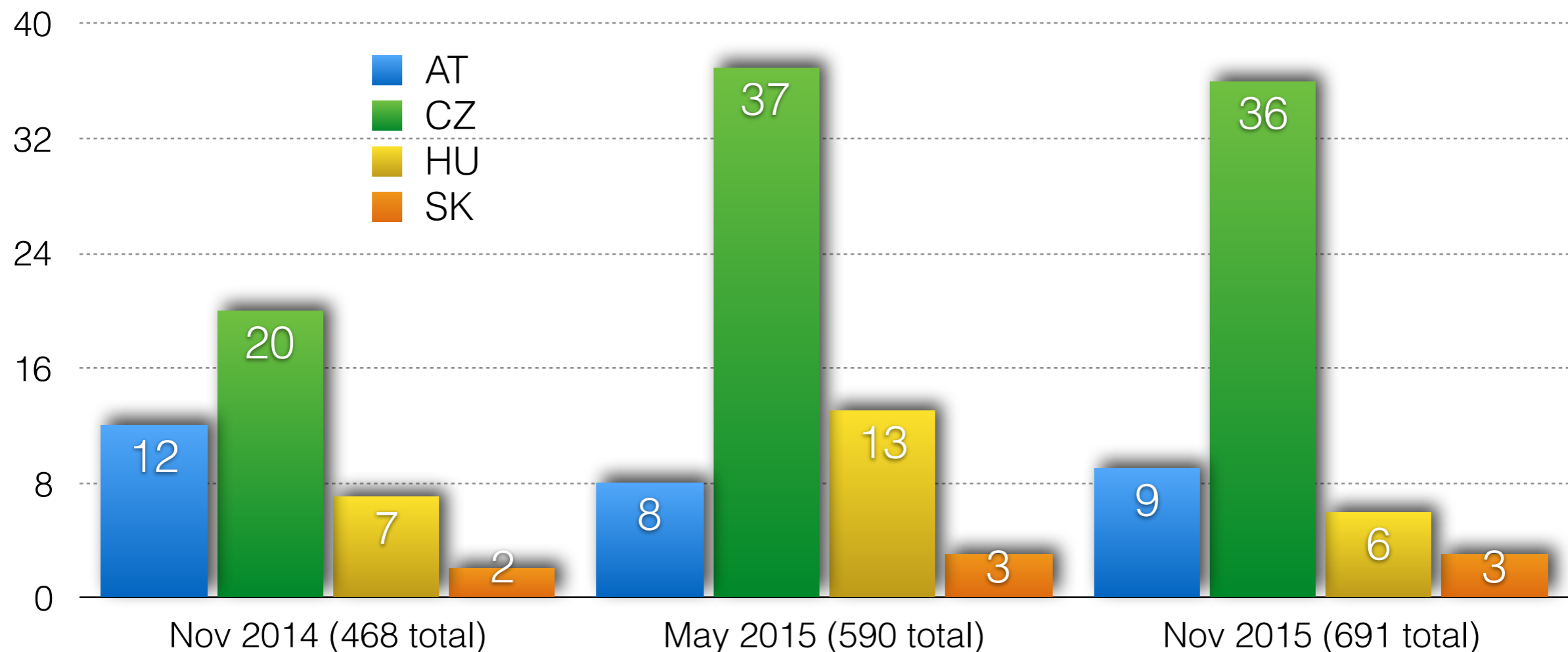


RIPE NCC General Meeting (May)



- Executive Board Elections
- 2017 Charging Scheme
- Have your say, and **VOTE!**

General Meeting Vote Registrations



Join us in.....



Tirana, 19-20 April - SEE 5



RIPE 72
23 - 27 May 2016
Copenhagen, Denmark

Copenhagen, 23-27 May - RIPE 72



Questions



sr@ripe.net